

Finish the Fight Eradicate Scrapie

Sheep Identification Requirements

STEP 1



Determine which sheep need official ear tags or IDs to move between different states (interstate) or within the same state (intrastate).

STEP 2



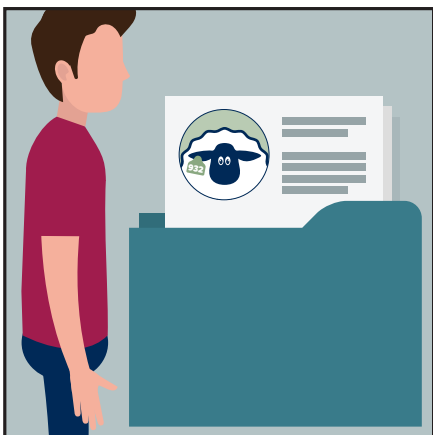
Request a flock ID from your local APHIS Veterinarian or State Veterinary office.

STEP 3



Determine which approved ear tags or ID systems work best for your operation and apply official IDs to your animals before they leave your farm.

STEP 4



Create a method to record your flock's official ear tags or other official IDs.

STEP 5



Get a health certificate from an accredited veterinarian before interstate shipment for breeding, exhibitions, or sale.

STEP 6



Retain records for 5 years after the animals are transported or sold.

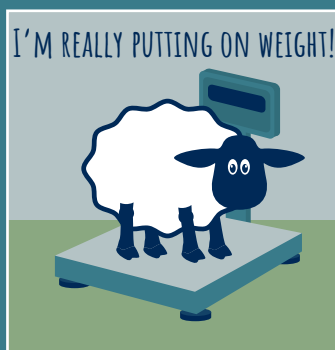
For more information on tags, or to get a flock ID, call **1-866-USDA-TAG (873-2824)**

Baa, where do I fit?



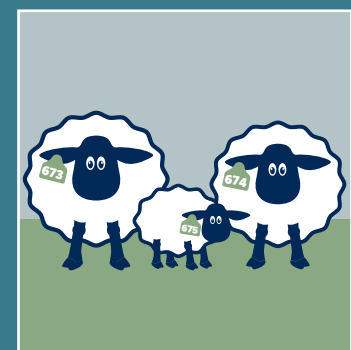
CULLED SHEEP

Culled ewes or rams must be officially tagged. Cull sheep are defined as animals more than 18 months of age sold for slaughter or through a livestock market.*



MARKET LAMBS

Intact lambs under 18 months of age going to slaughter DO NOT need official ear tags if they are moved with an Owner Hauler Statement and Group Identification Number.*



BREEDING/OTHER STOCK

Breeding ewes or rams DO NOT need an official ID if they stay on the farm or ranch. Official IDs are REQUIRED for any breeding stock going to a show or sale, changing ownership, or crossing a stateline. *Note: Local shows are considered interstate movements if any out-of-state sheep attend.**

* This poster provides generally applicable principles. Please go to <https://www.aphis.usda.gov/sites/default/files/fs-scrapie-recordkeeping.pdf> for additional information and exceptions including requirements for sheep in slaughter channels not going direct to slaughter.