



2024

Adelaide Australia

Lamb Ex

LambEx is a biennial event with an aim to promote Australia's sheep and lamb industry as a highly progressive and professional industry. Established in 2010, the event has rotated around major sheep producing states, with 2014 being the last time it was staged in Adelaide.



Global Sheep Forum

The Next Generation Global Sheep Forum has come out of a group of international sheep producer organizations including the American Lamb Board, Beef + Lamb New Zealand, British National Sheep Association, Canadian Sheep Federation, National Wool Growers' Association of South Africa and Sheep Producers Australia.

One of its purposes is to share information and support sheep farming around the world. One way they aim to do this is by connecting young farmers through a research project which commenced in May 2024 and provided the opportunity to meet face-to-face in Adelaide, Australia and participate in LambEx.



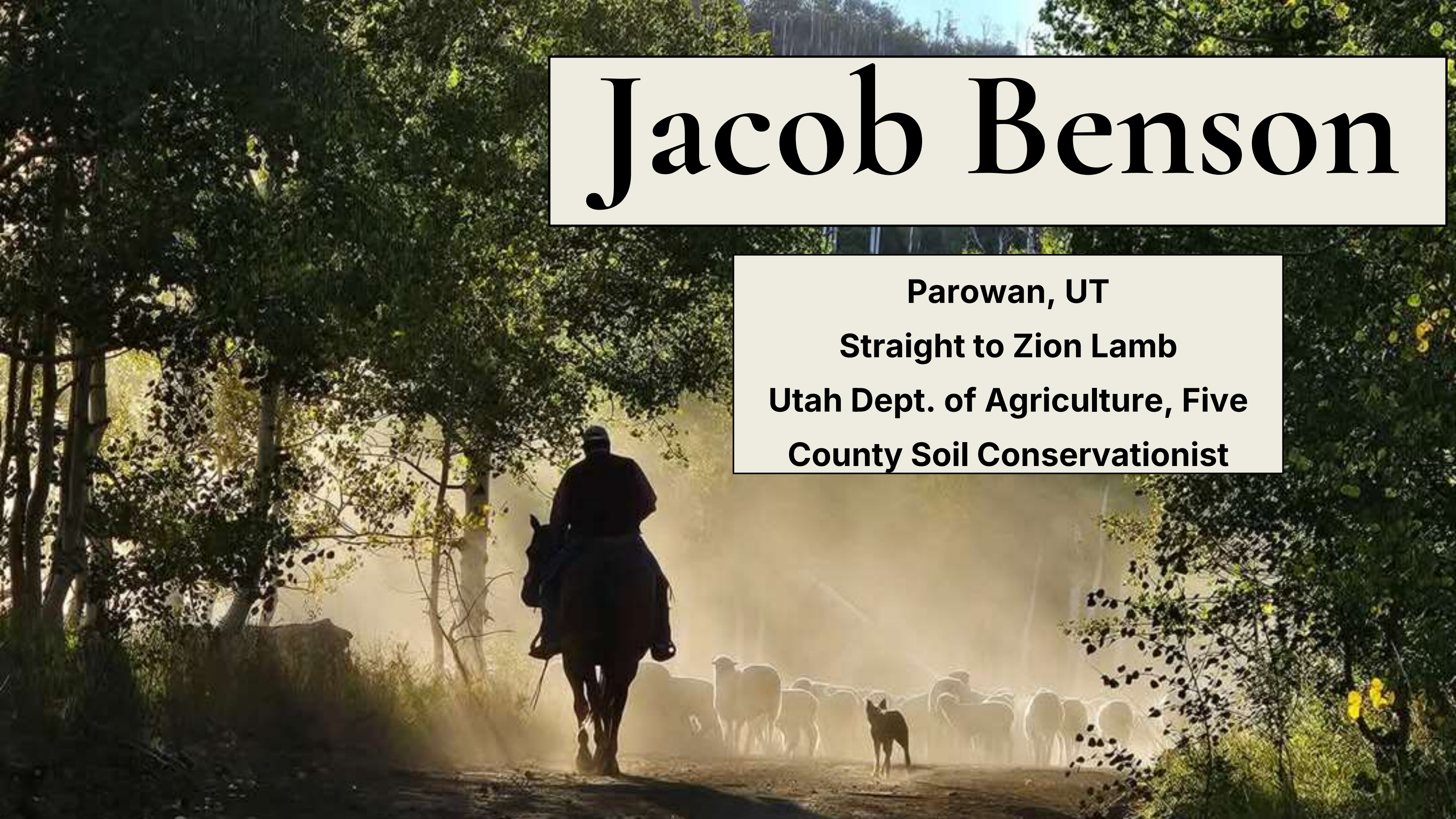
Jacob Benson

Parowan, UT

Straight to Zion Lamb

Utah Dept. of Agriculture, Five

County Soil Conservationist

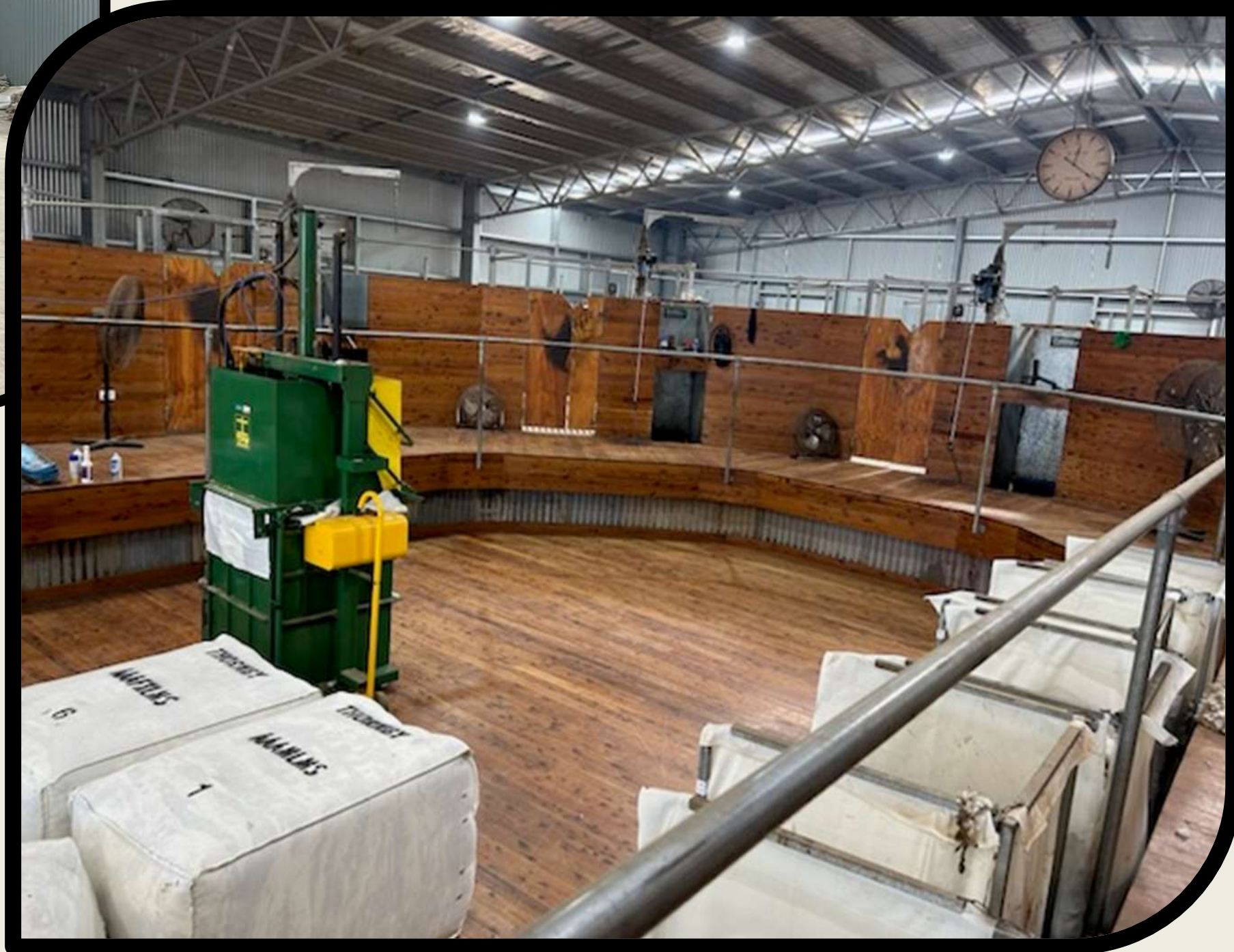
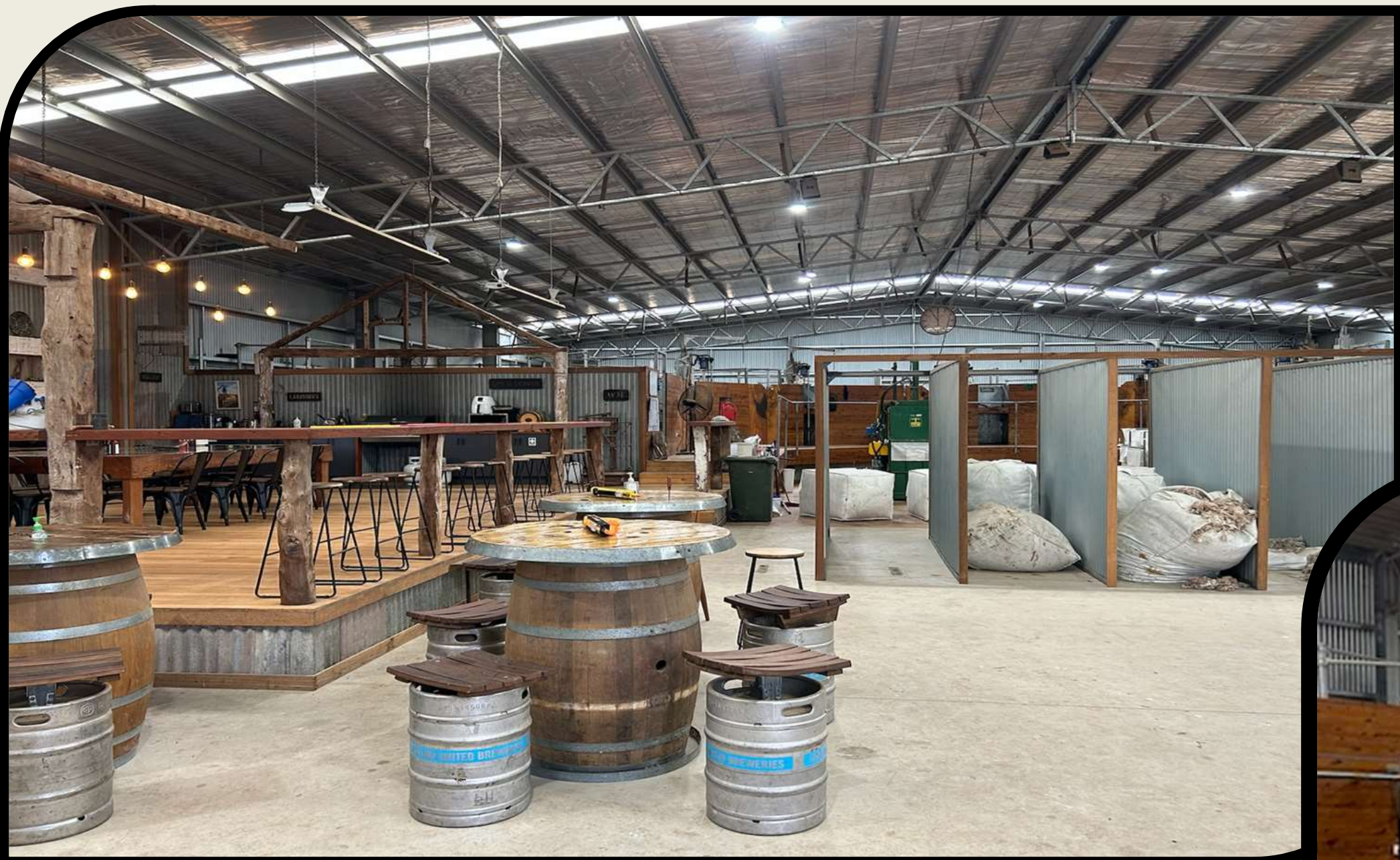




THORNBY

Thornby is a 4th generation family farming business focused on sourcing lambs from producers to be finished in a feedlot setting. In 2010 they received accreditation to the Livestock Production Accreditation Scheme – Quality Assurance (LPAS-QA) administered by AusMeat. They report they are one of only 5 producers in Australia to have achieved this standard.





Thornby Feed Lot & Shearing Sheds

Harvestaire Lamb Marking Cradle

Portable device designed to save producers time and money on labor costs, increase productivity, and enhance the welfare of lambs during the lambing season.

- Rotary Configuration for efficient handling of lambs by multiple operators
- Auto Release Handle- allows lambs to be released onto their feet, tipping them out of the bucket rather than just dropping them on the ground, reducing damage to joints and saving operator back and arm strain.
- Adjustable height to support appropriate body mechanics of multiple operators




Portable docking unit with sorting gates to enable the sorting high volumes of ewes and lambs while also processing lambs.



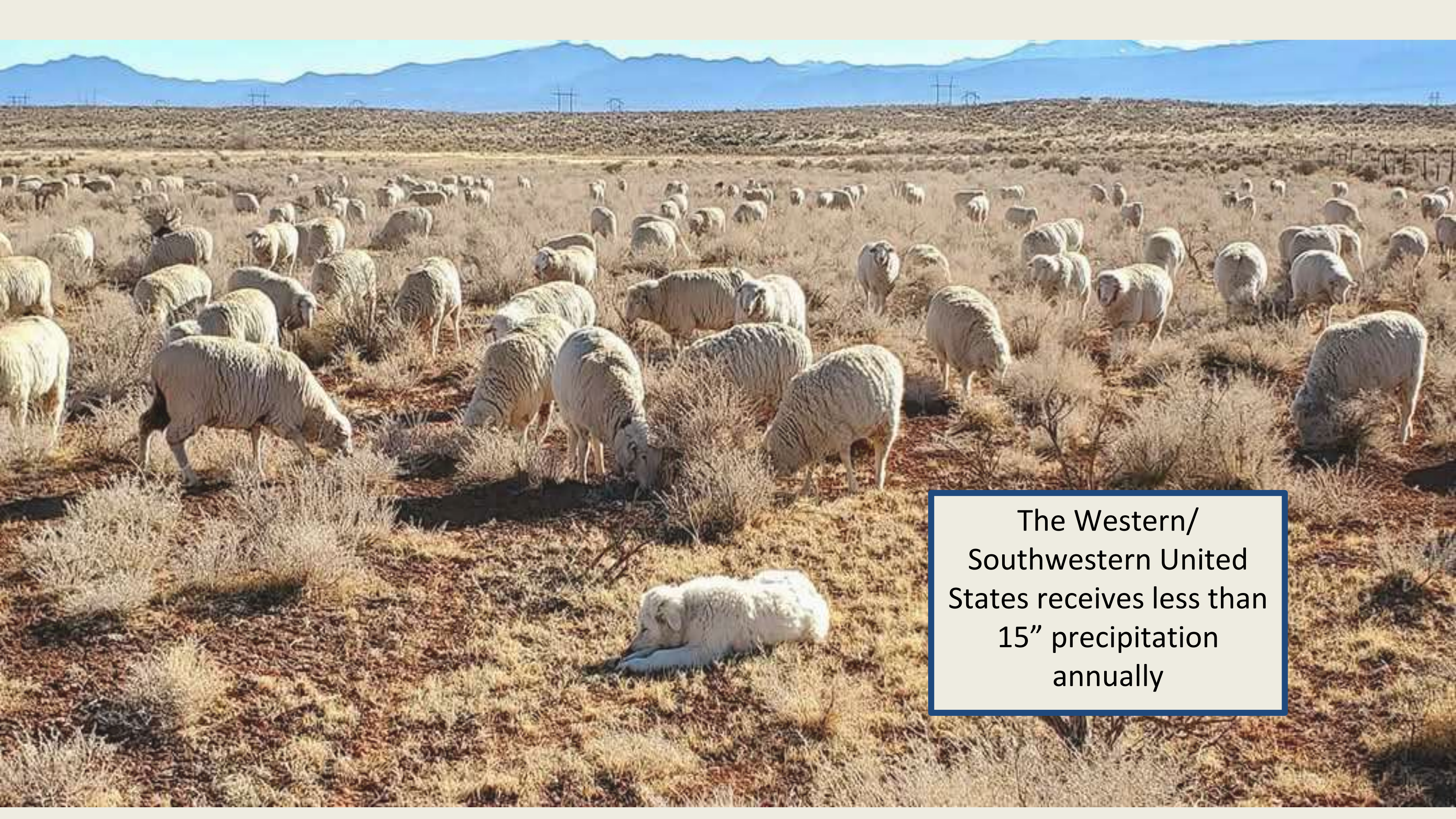


**Over 90% of Australian
lamb is grass fed, without
being finished on grain**



An aerial photograph showing a vast, flat landscape under a clear blue sky. A long, straight dirt road runs from the foreground towards the horizon. A massive flock of sheep is gathered along the road, stretching for a significant distance. To the left of the road, there is a small, rectangular pond. The ground is mostly dry and yellowish-brown, with some patches of green grass. The overall scene depicts a typical pastoral or agricultural setting in a semi-arid region.

Australia's average annual precipitation is less than 12" for 50% of the country



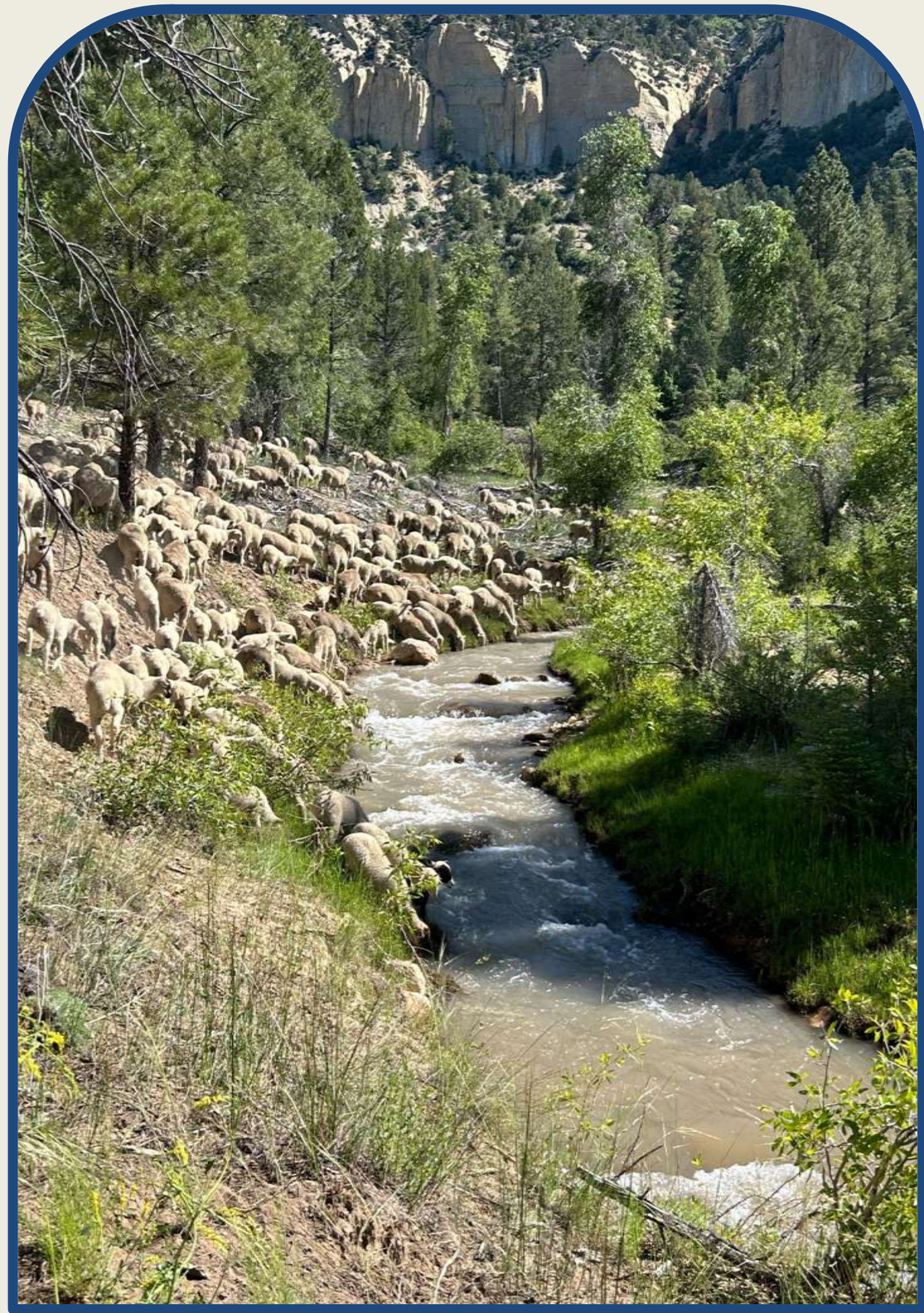
The Western/
Southwestern United
States receives less than
15" precipitation
annually

Australia



Utah







Combination drench for sheep containing abamectin, albendazole, closantel, and levamisole. Not available for purchase in the United States.

Resources

<https://www.thornby.com.au/>

aussiebeefandlamb.com

<https://www.waterquality.gov.au/sites/default/files/documents/livestock-drinking-water-guidelines-draft.pdf>

